



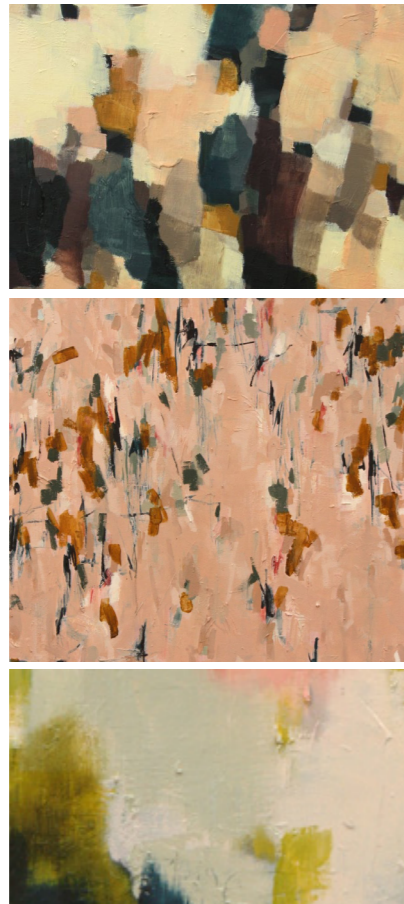
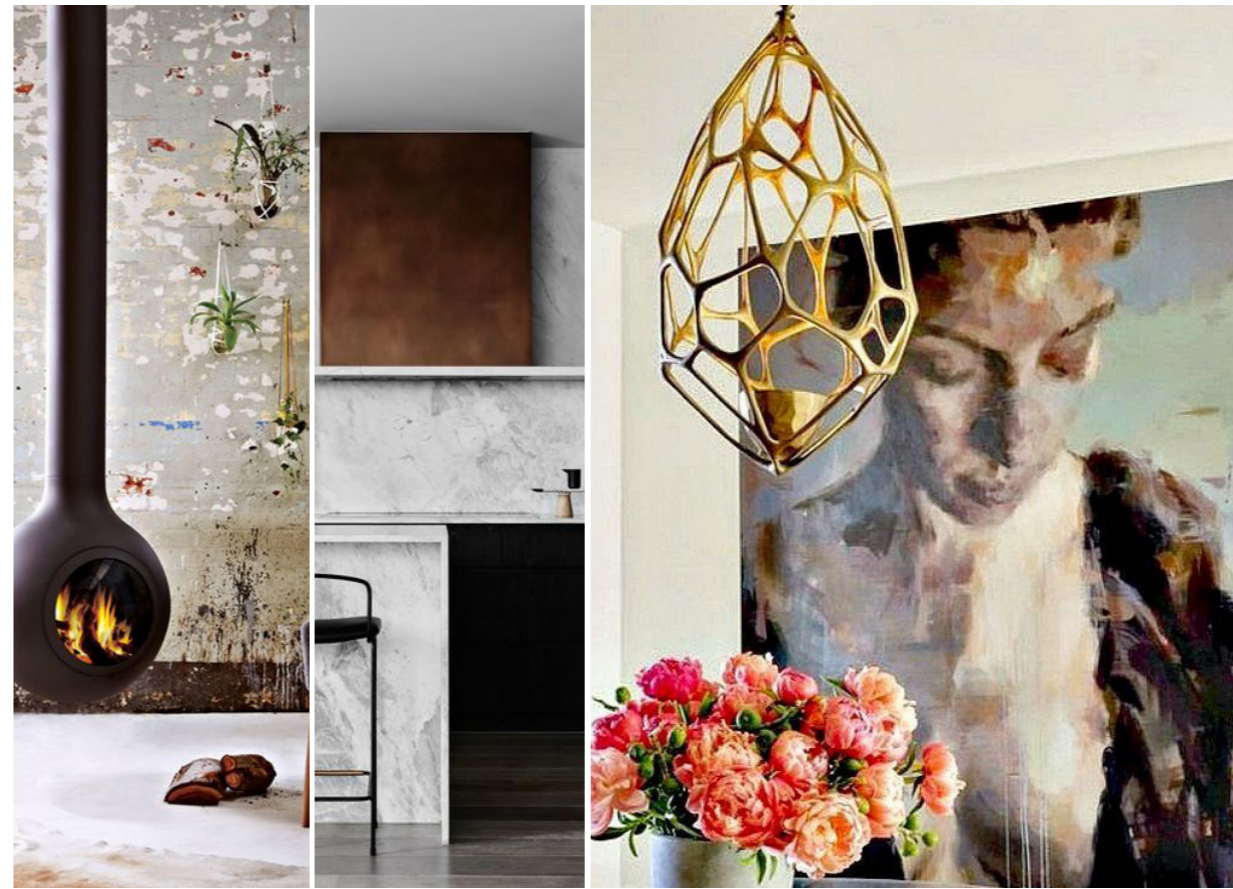
J O B U S W E L L
P O R T F O L I O



DINING, LIVING, OFFICE

This space will be the sanctuary that you have always dreamed of, with a strong rich colour palette of golds, greens, and deep earth colours you will feel calm and welcomed every time you come home.

Celebrating local artisans, the living/dining space will bring together locally produced hand-blown pendant lights, custom timber furniture and truly stunning Australian Spotted Gum flooring. Textures will be used in the form of area rugs, fabrics and tiles between the living room, kitchen and office.

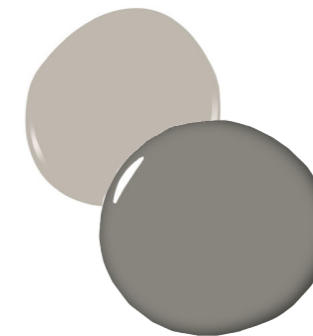
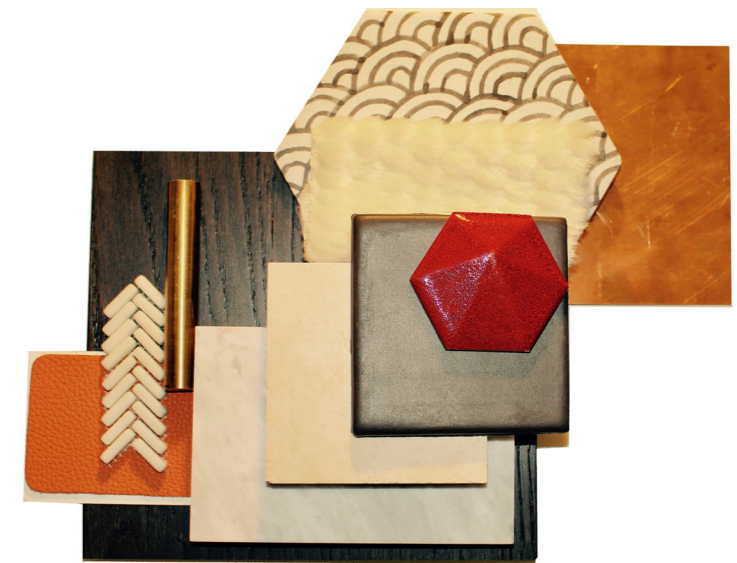


Commissioned artwork by
Melbourne Artist Hannah Fox



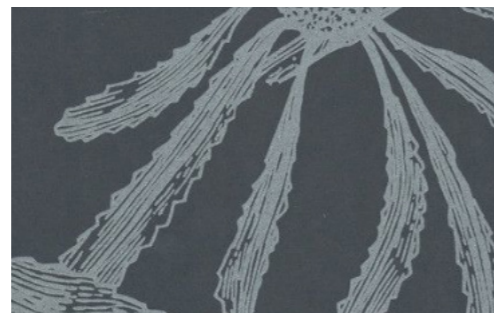
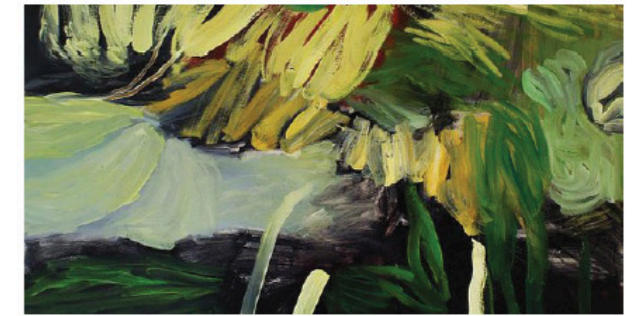
A flexible floor plan, that will enable you to have the convenience of an office space as well as a guest bedroom. Custom timber dining table to seat 8, and a suspended bio-fuel fire to regenerate by after your demanding day.

WELCOMING, PEACEFUL, REJUVENATING



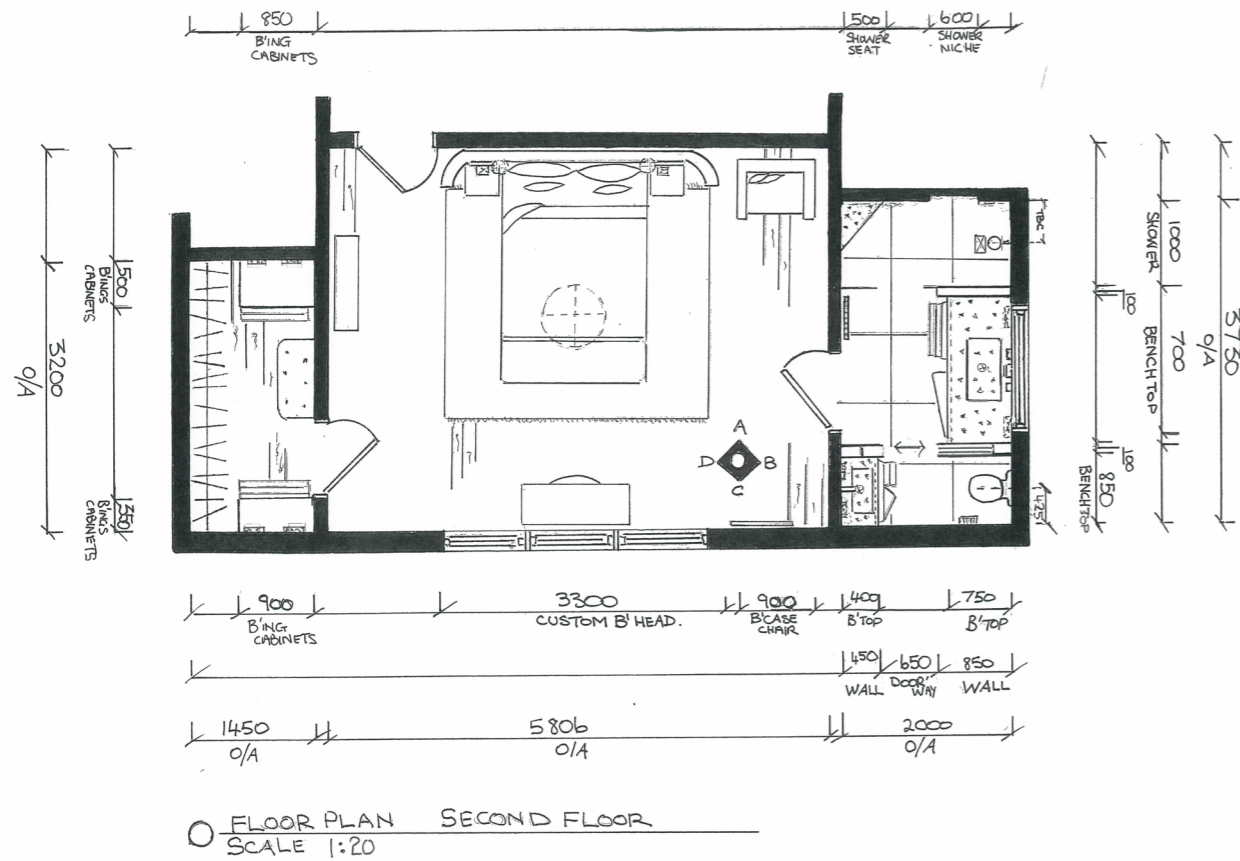
Porters Paint
Dove Grey &
Friars Full Grey

WELCOMING, PEACEFUL, HARMONIOUS

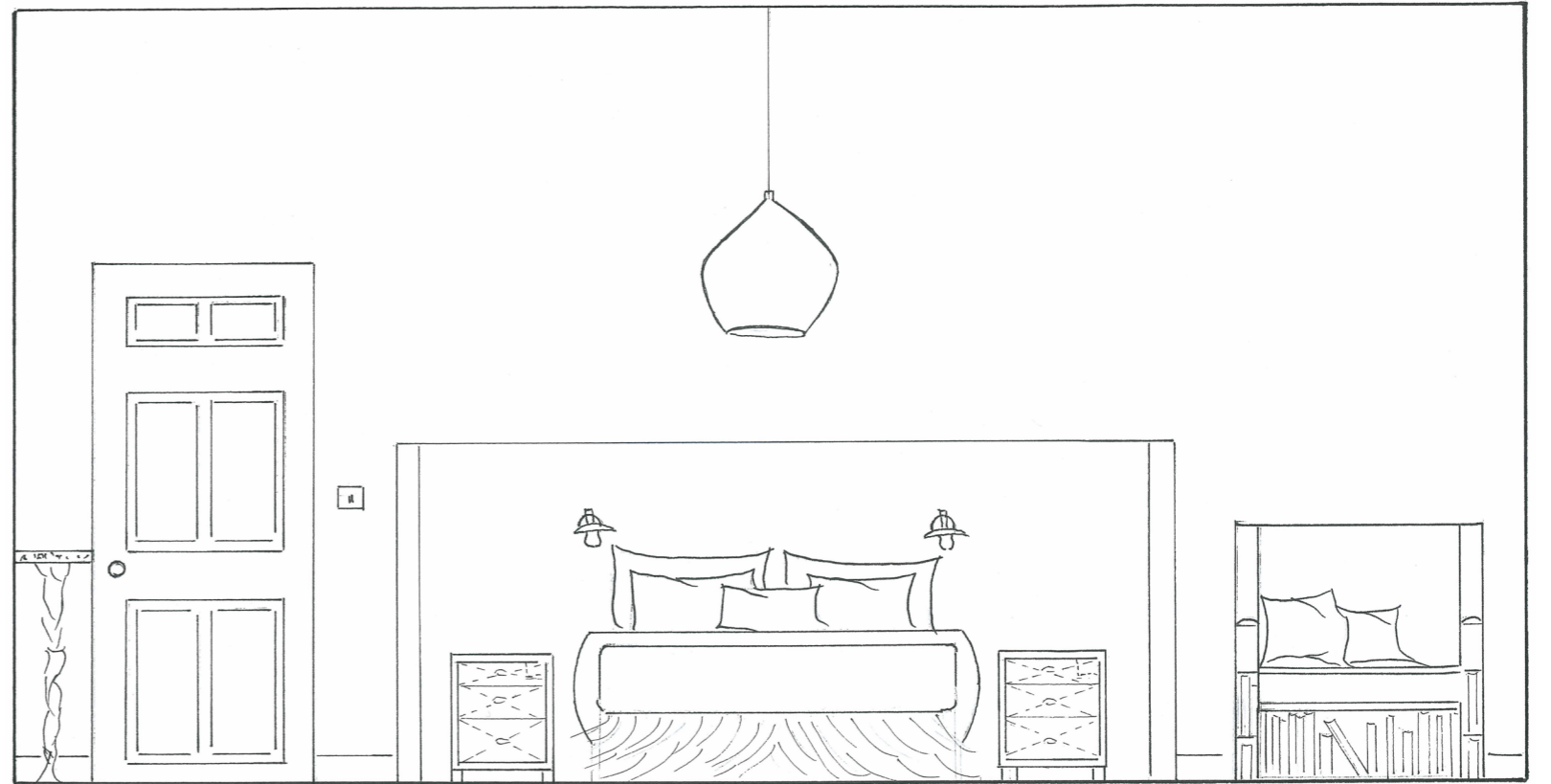


Your Master Bedroom will be a place of peace and rejuvenation. A sanctuary where you can rest each day with its luxurious custom made king sized bed, linen sheets and feather filled pillows, all surrounded by the very best in quality finishes. Using soft fabrics, textures and ambient lighting, this room will cocoon you and ensure you a great nights sleep. A bespoke staircase will lead you to the living area above and will mirror your love of balconies in your favorite European city of Barcelona.

DISTINCTIVE, SUMPTUOUS, RESTFUL

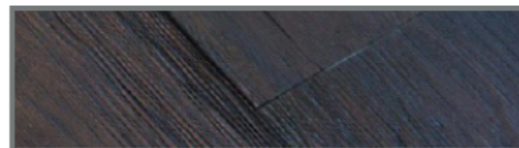
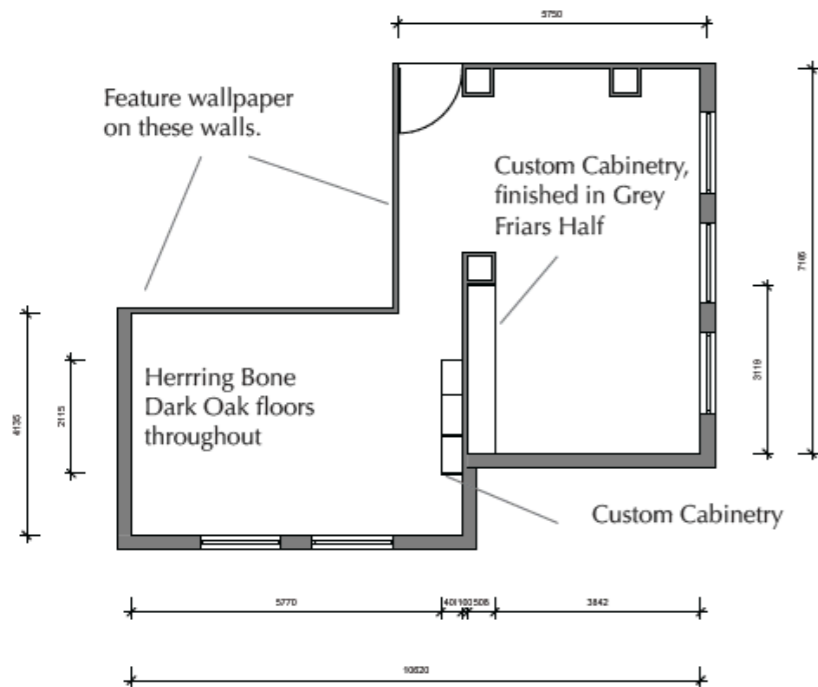


This is an exciting project for your new home in Kew. Your requirements for this beautiful renovation of your master bedroom and ensuite is to create a unique space that reflects your individual personalities. This space will have the capacity to evolve as your family grows. You wanted a reading chair for the many books you have 'on the go', while having somewhere to indulge your love for fashion with a dressing area. We have designed a luxurious ensuite with a rain head shower, stone benches, and European brushed metal tapware.



CONTEMPORARY, CALMING, TEXTURAL

This unique client brief asked for us to design a colour palette to reflect the needs of the client who regularly entertain international guests. A dining room and living space that demonstrates elegance, luxury with emphasis pieces of art and furniture. These rooms will have a flow and balance to them with a layout that will easily cater for up to 12 guests. We have chosen soft greys, and deep teal blues, all illuminated with this stunning crystal light sculpture by Melbourne's own Christopher Boots.

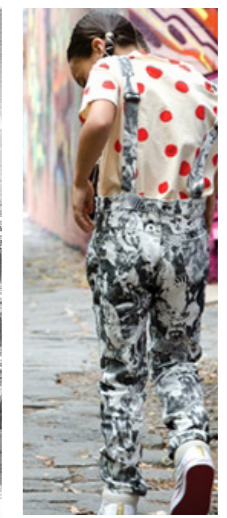


CREATIVE VIBE, COMMUNITY, INCLUSIVE

Collingwood's Ace Hotel will deliver the unique brand of Ace Hotels International in the way only Collingwood Melbourne can. This benchmark boutique hotel will be a hub to immerse into and enjoy Music, Art, Community and Life's Pleasures. The hotel will celebrate local artists, with street art, sculptures and canvases. Retro furniture from Smiths Street Bazaar, and artisan furniture makers Zuster and Mark Tuckey.



Collingwood
"The Hood"

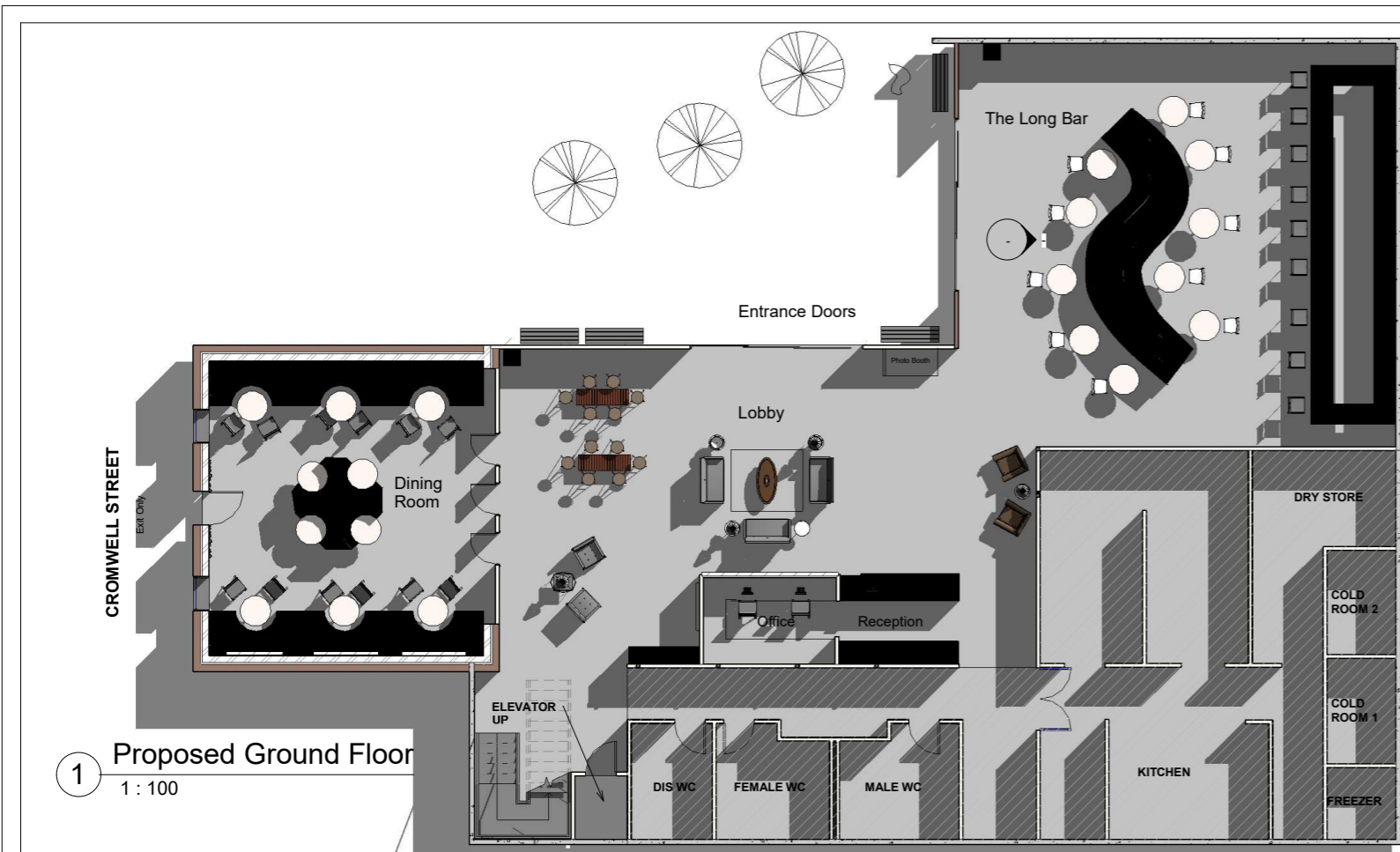


Community
The Magpies

Coffee Religion STREET



Loyalty
Street Art
Culture
Cromwell Street



1 Proposed Ground Floor
1 : 100

Jo Buswell
Interiors

Phase 4: Construction Documentation
Issue Date: 12/6/18
Note: All dimensions need to be verified by the contractor on site

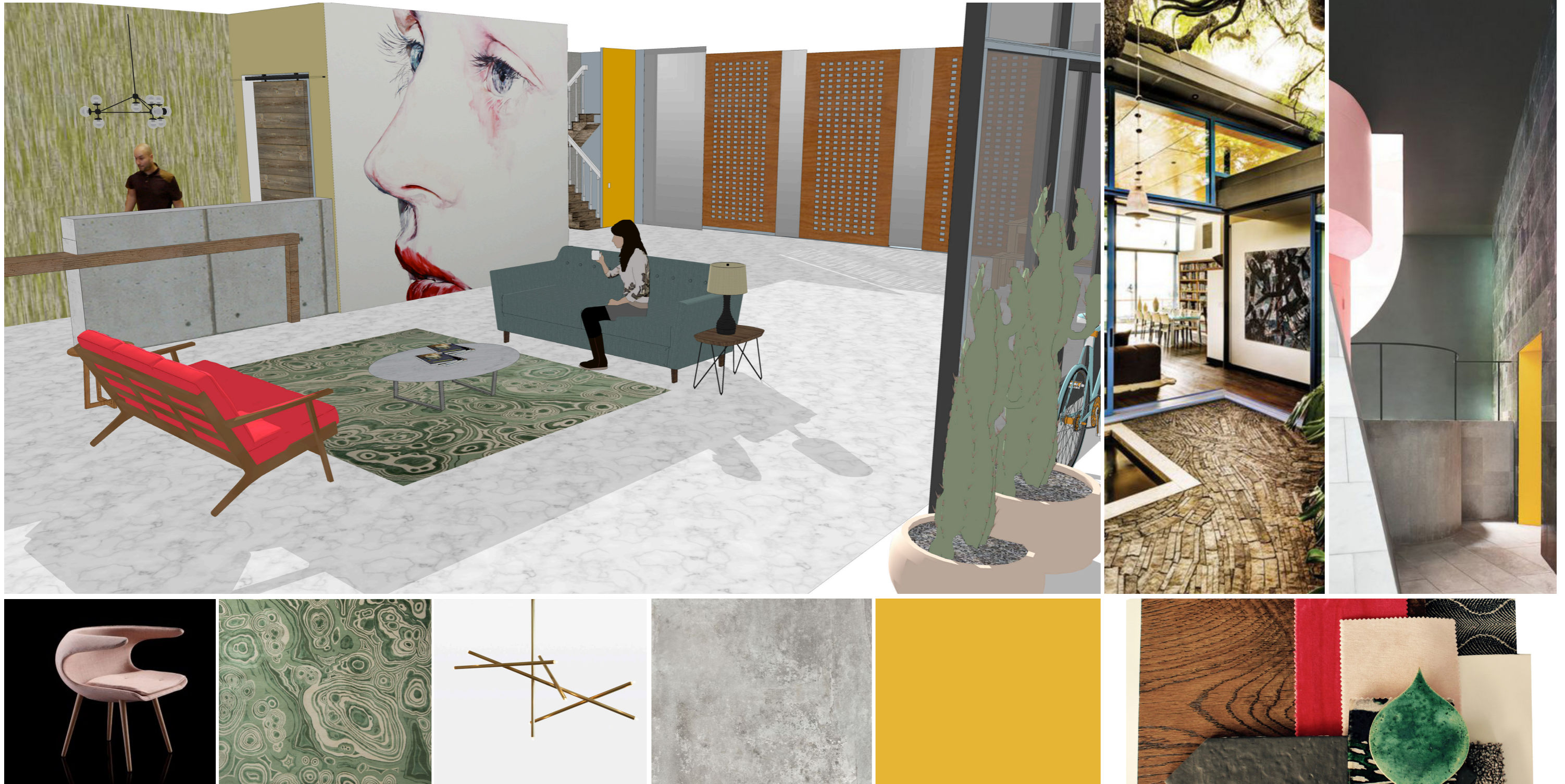
Ace Boutique Hotel
66 Cromwell St
Collingwood

Proposed Ground Floor Plan	
Project number	Phase 4
Date	12/6/18
Drawn by	Jo Buswell
Checked by	Author
	Checker
Scale	1 : 100

1/07/2018 10:30:01 AM

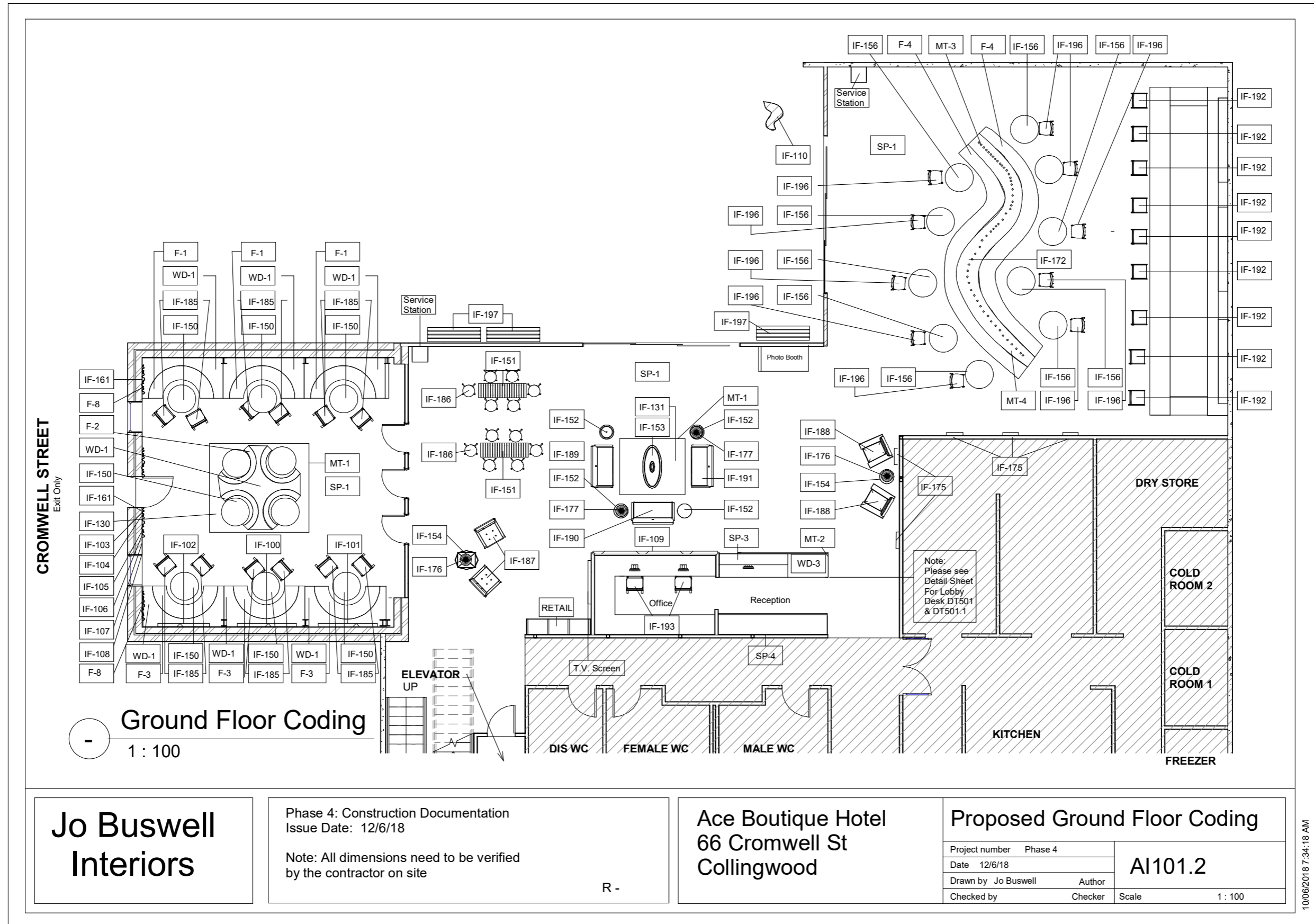


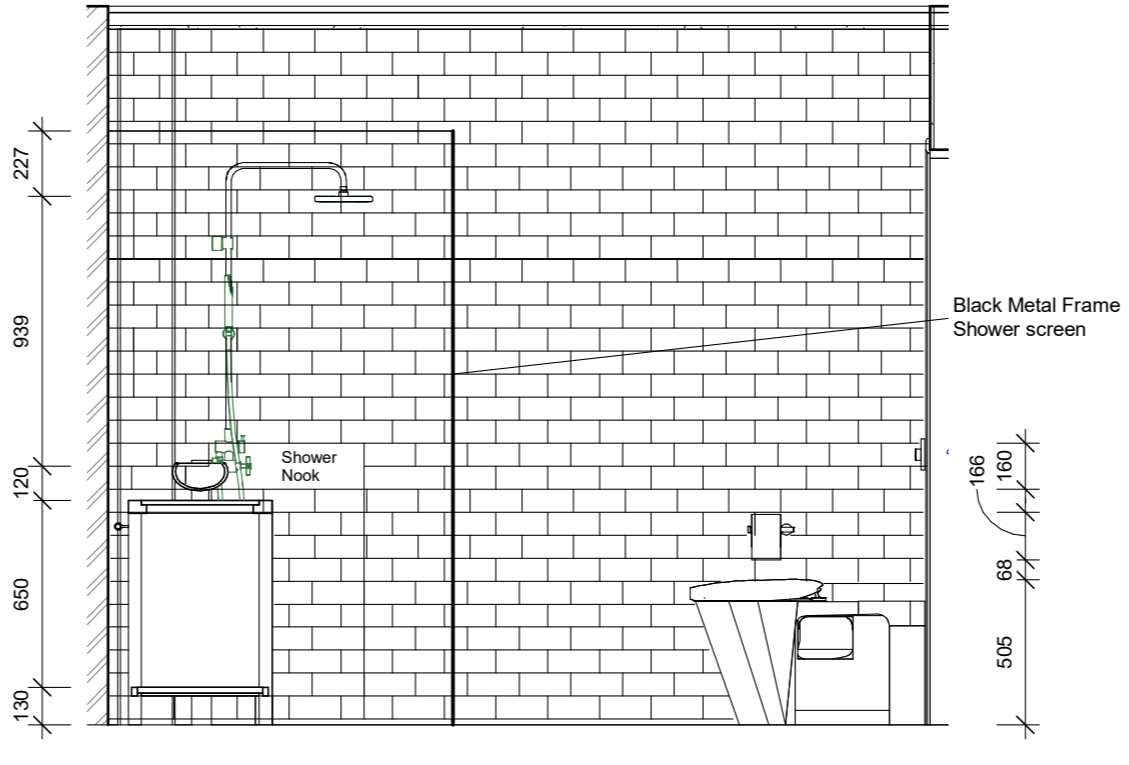
THE LOBBY



This is the heart of the hotel, the place to know you have arrived, you can relax and know you're in safe hands. This space will have an eclectic feel with a mix of retro mid-century pieces and contemporary lighting that will give that home away from home feeling, yet be unique all in itself. And the hero of the space it's statement piece of street art by Kim Hyunji.

BOUTIQUE HOTEL - REVIT DOCUMENTATION





E7 Shower Elevation
1 : 20

**Jo Buswell
Interiors**

Phase 4: Construction Documentation
Issue Date: 12/6/18

Note: All dimensions need to be verified
by the contractor on site

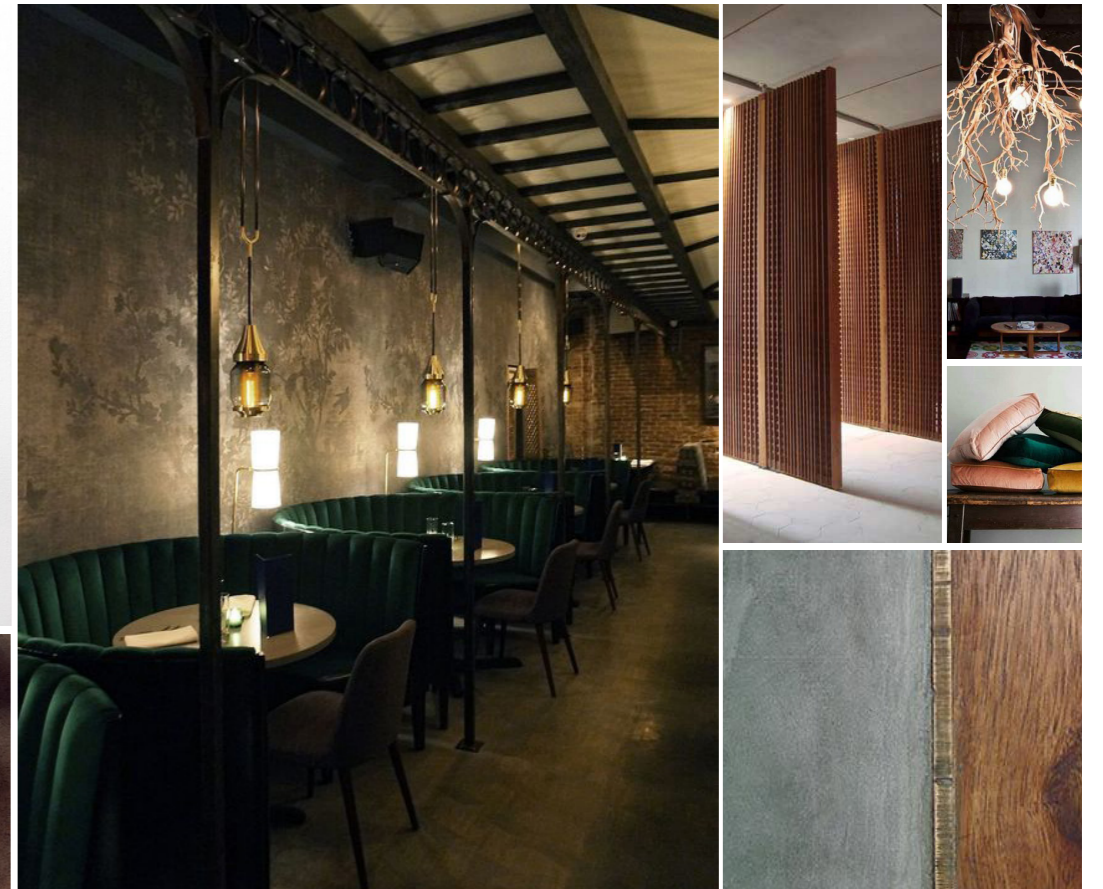
R -

**Ace Boutique Hotel
66 Cromwell St
Collingwood**

Shower Elevation		AI 207
Project number	Phase 4	
Date	12/6/18	Scale 1 : 20
Drawn by	Jo Buswell Author	
Checked by	Checker	

11/06/2018 9:37:28 AM

INTIMATE, INDULGENT, EMMERSIVE



The Dining Room is an exclusive space that will entice the diner to enter through its bespoke timber doors.

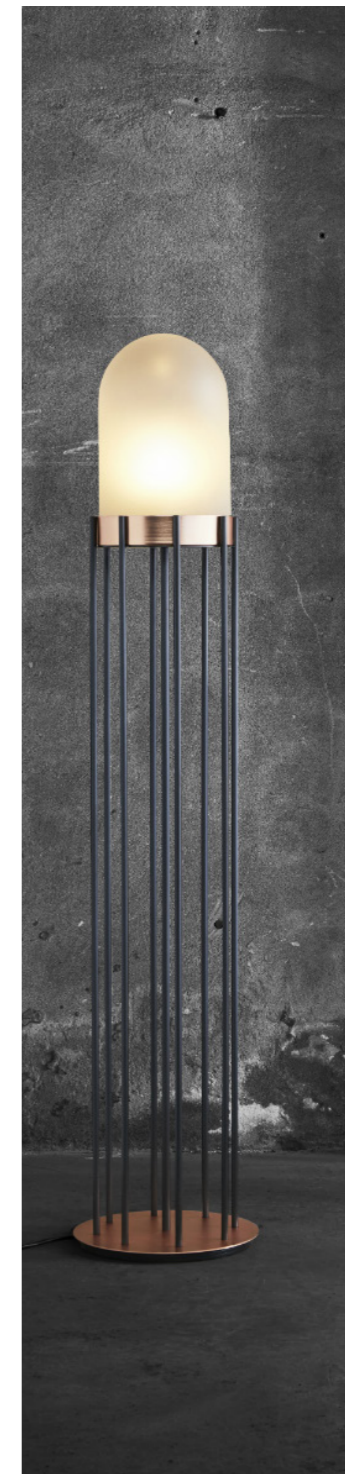
Once inside, you will be immersed into a food haven where the outside world stops and this small intimate dining room will envelop you within its gallery of Steve Salo's art.

Banquette seating and stunning lighting with the central Sputnik chandelier and naked bulb pendants draw the guest closer and deeper into conversation.

THE LONG BAR



This space on the ground floor of the hotel will be the meeting place for quests and visitors. The Long Bar will reflect the diversity of Collingwood's culture with its sculptural brass rods soaring from the banquette seating in the centre of the room. These rods represent Melbourne's unique cityscape with the peaks of Eureka tower to the intriguing laneways. The banquette is finished in Corten steel to give it a sense of place in Australia's red dirt centre and that nod to the industry of the inner city area. This Long Bar is perfect for that quick drink after work, or a long stay to celebrate life's milestones.



THANK YOU FOR YOUR TIME